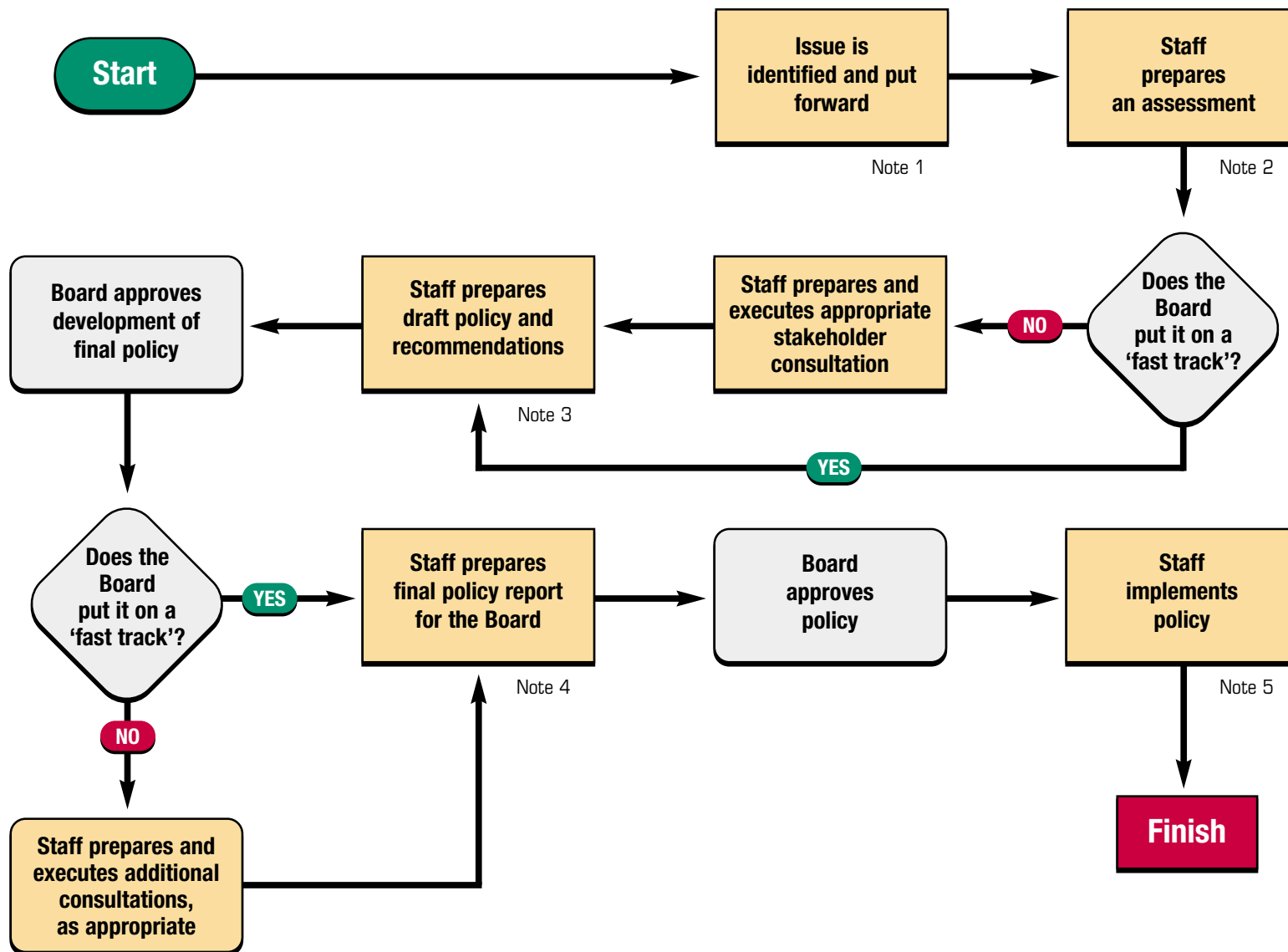


Policy Development Process



Notes:

- * The Board may cancel the processing of a policy at any time during the PDP process.
- 1. Issues can be identified by the Board or by CIRA staff. Issues identified by the local Internet community are put forward by either the Board or CIRA staff.
- 2. An assessment may integrate input from a variety of sources, including Board committees.
- 3. These documents take into account any consultation findings.
- 4. The final policy report may include the results of any additional consultations.
- 5. Implementation includes posting the new policy on the public web site for 30 days (as it is done currently) before the policy becomes effective.